



## PRESS RELEASE with photos

FOR IMMEDIATE RELEASE

---

*Small Unmanned Aerial System Technologies  
demonstrated at Atlantic County Utilities Authority,  
City of Ventnor and Egg Harbor Township Nature  
Reserve*

September 30, 2020 Atlantic County – Geomatix, LLC, of Pennington, NJ, has successfully demonstrated use of mapping and sensor technologies via small Unmanned Aerial Systems (sUAS, or “drone”) to the Atlantic County Utilities Authority, the City of Ventnor’s dune project, and the Egg Harbor Township Nature Reserve.

The Geomatix drone demonstration projects used high definition cameras on drones to provide topographic mapping and 3-D modeling of sensitive land surfaces. In addition, specialty sensors were deployed to measure the thermal and spectral properties of the land, water and biomass. Geomatix conducted the demonstrations on a pro bono basis, in the hope of building awareness about how these powerful tools can be used to address South Jersey’s environmental concerns.

Nate Vary, a volunteer for the Egg Harbor Nature Reserve and an experienced engineer, assisted with the Reserve project. “The products look amazing, even better than my high expectations,” Vary said of the final report.

Geomatix co-founder and CEO Chris French remarked, “The ability to map our planet is a fundamental pre-condition to achieving a sustainable balance between the Earth’s ecosystem and human co-existence. Each of these demonstration projects was highly successful in advancing our partners’ understanding of their unique site setting and its physical and ecological properties.”

“People are always surprised by the level of exploration we can do via drone and sensor technology,” French noted. “By example, the health of a forest can be assessed by measuring photosynthesis in the near-infrared wavelengths of light.”

Geomatix is one of seven companies participating in the business aviation accelerator program sponsored by the Smart Airport and Aviation Partnership (SAAP), a central player in the emerging Southern New Jersey aviation hub. The SaaP, which includes Atlantic and Cape May County as members, was established through a Regional Innovation Strategies Grant from the U.S. Economic Development Administration. Both the Atlantic County Economic Alliance (ACEA) and the National Institute of Aerospace (NIA) also participate actively.

“We are very excited to be part of the accelerator program,” added French. “What draws Geomatix to the South Jersey aviation ecosystem is the unique blend and concentration of regulatory, commercial, academic, technical and civic resources.

“The actions of the economic development authorities have seeded a unique ecosystem of entrepreneurs, developers, researchers and suppliers that drive technological innovation and collaboration for problem solving here. There is deep bench strength within the National Aviation Research and Technology Park (NARTP), the FAA Technical Center and the Cape May Drone Testing Center. From a human resource perspective, we’re also seeing a steady pool of talent emerging from Rutgers University, Stockton and Rowan Universities and Atlantic Cape Community College.

“There’s strong incentive to locate a regional office here,” French said.

More information about the local demonstrations may be found at [www.geomatix.us](http://www.geomatix.us)

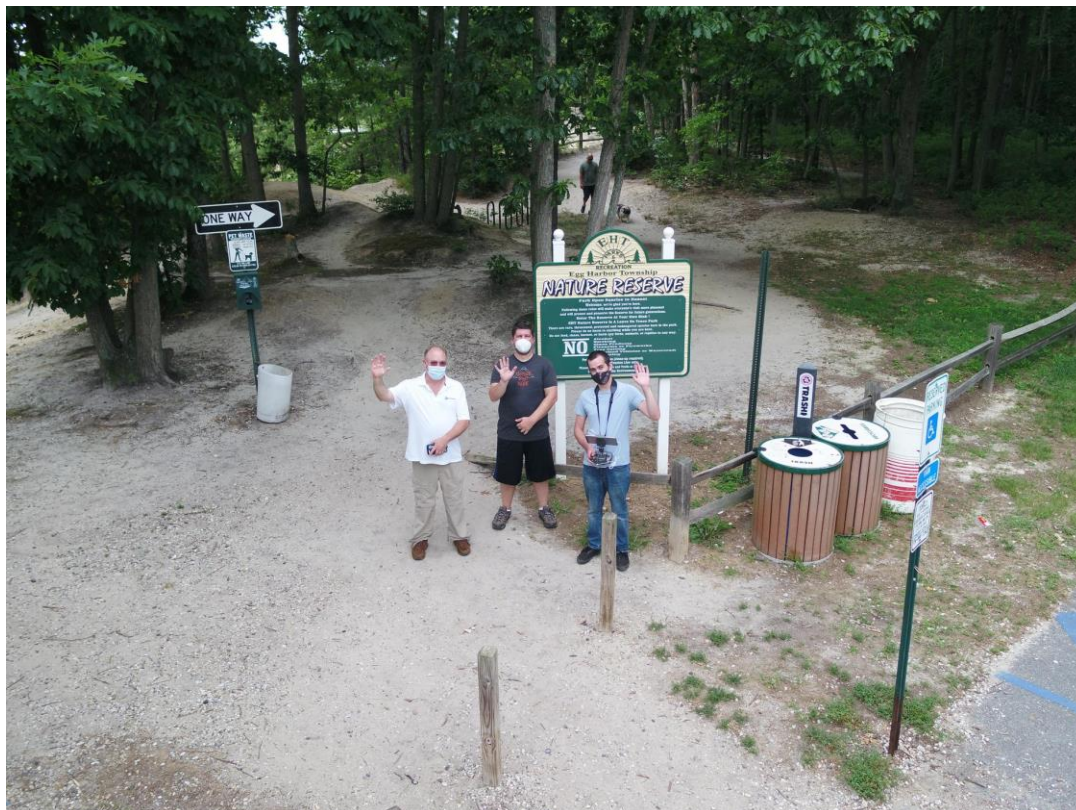


PHOTO CAPTION: (l-r): Chris French (Geomatix), Nate Vary (EHTNR) and Ben Jarrett (Geomatix) flying aerial mission at the Egg Harbor Township Nature Reserve.

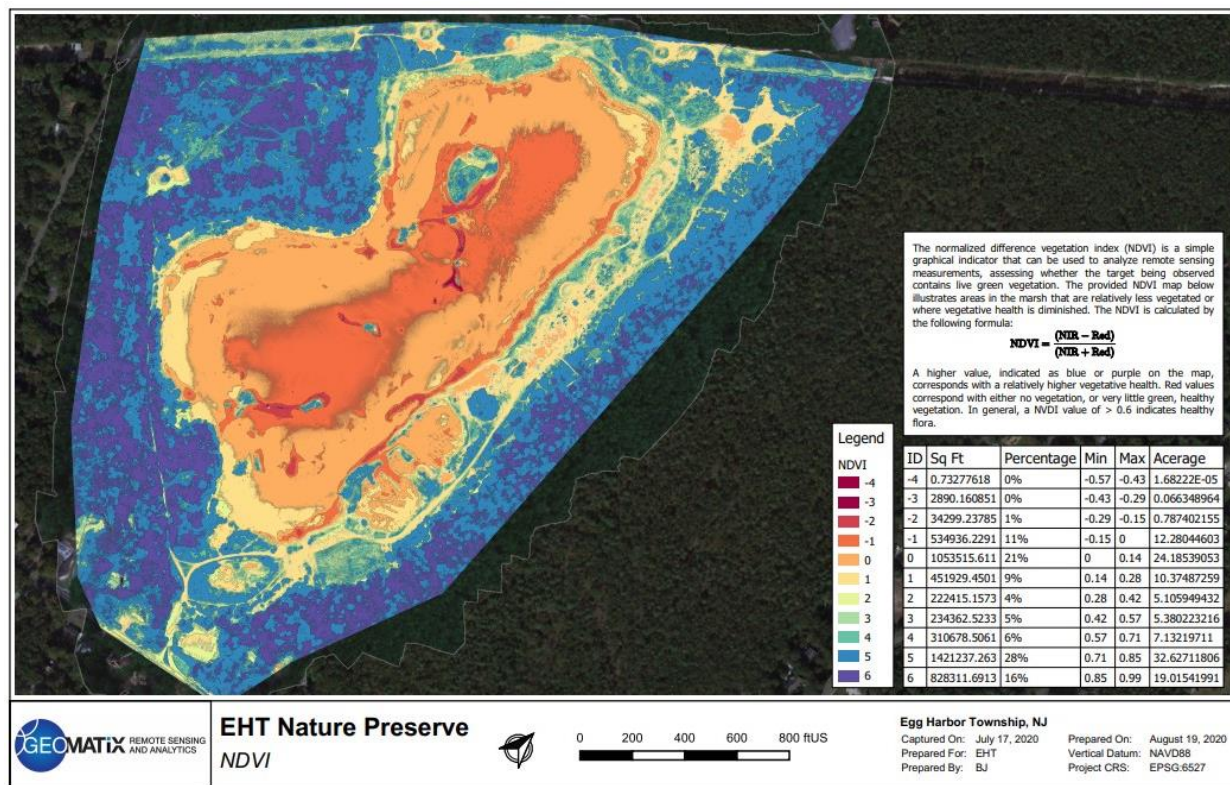


Photo Caption: Spectral mapping of land, water and biomass at the Egg Harbor Township Nature Reserve.

<<REMAINDER OF PAGE LEFT INTENTIONALLY BLANK>>



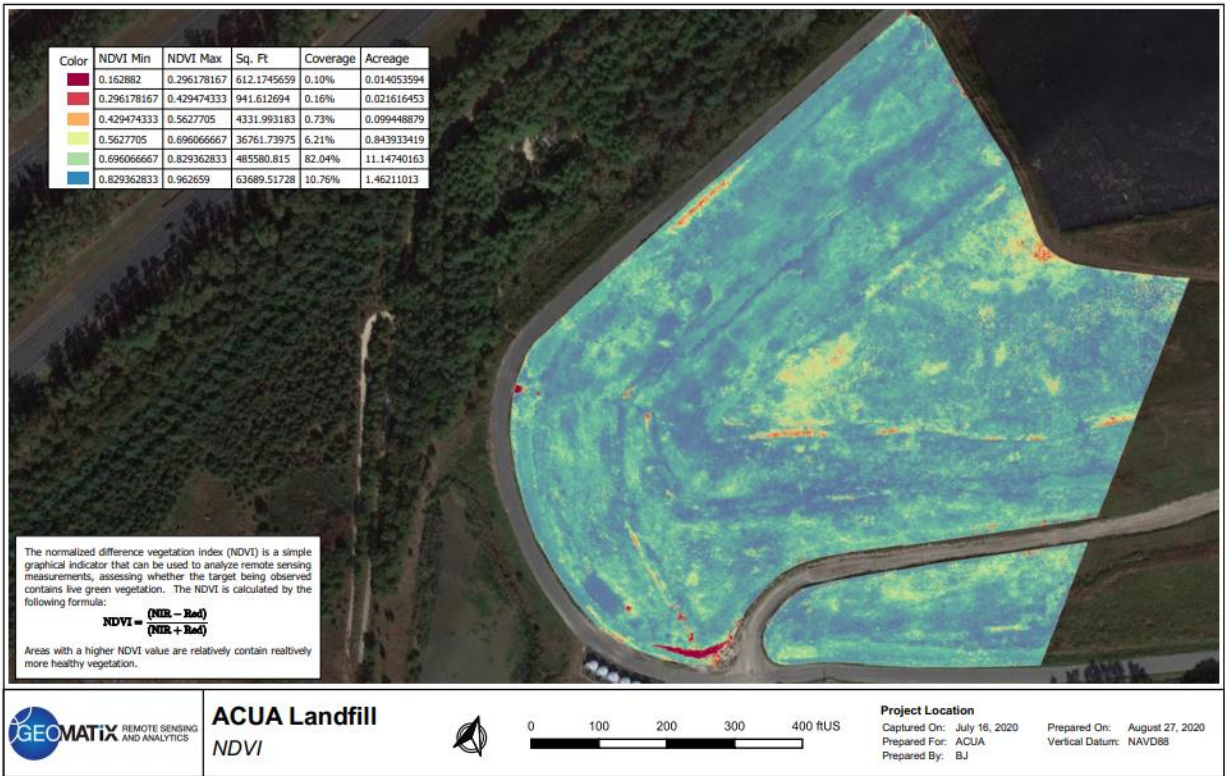


Photo Caption: Spectral image of ACUA landfill presenting health of vegetative cover.

<<REMAINDER OF PAGE LEFT INTENTIONALLY BLANK>>

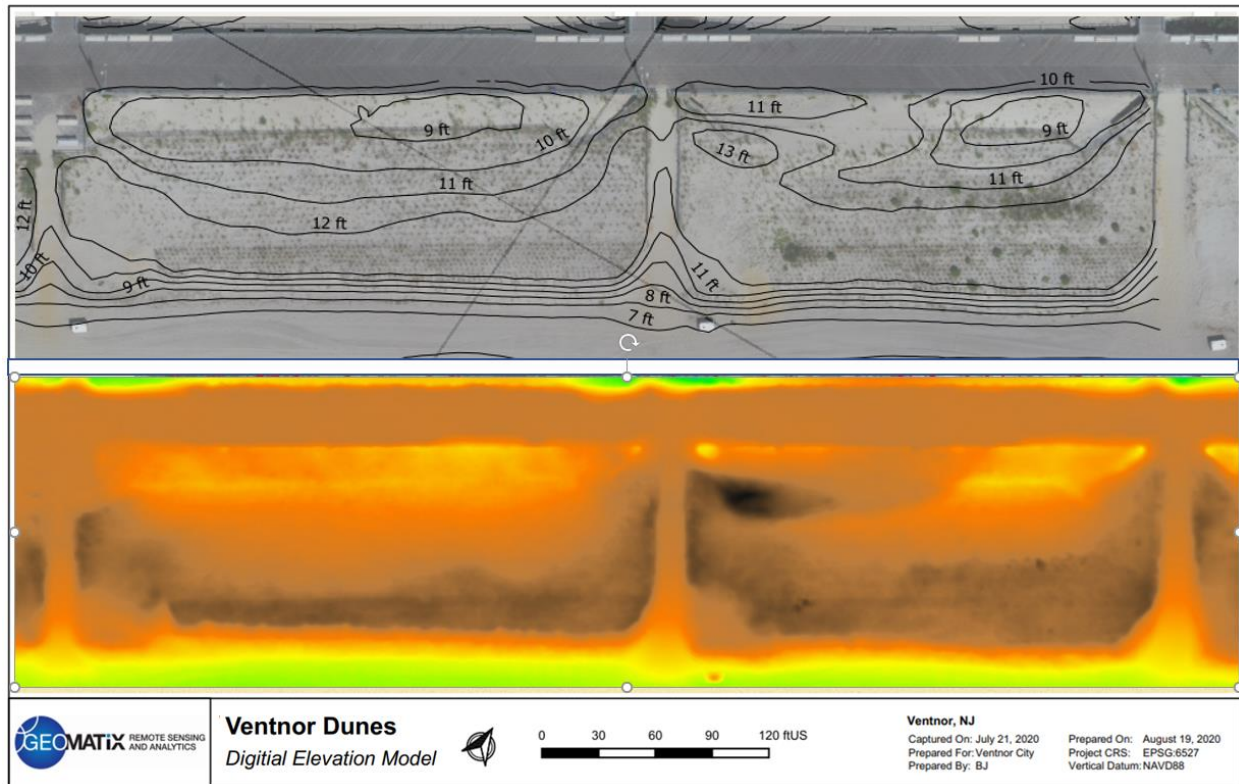


Photo Caption: Unmanned Aerial Orthophotograph and Digital Elevation Model of Ventnor City Dune Segment.

**Media Contact:**

Chris French, CEG

CEO

Geomatix, LLC

609-721-9407

Email: [cfrench@geomatix.us](mailto:cfrench@geomatix.us)